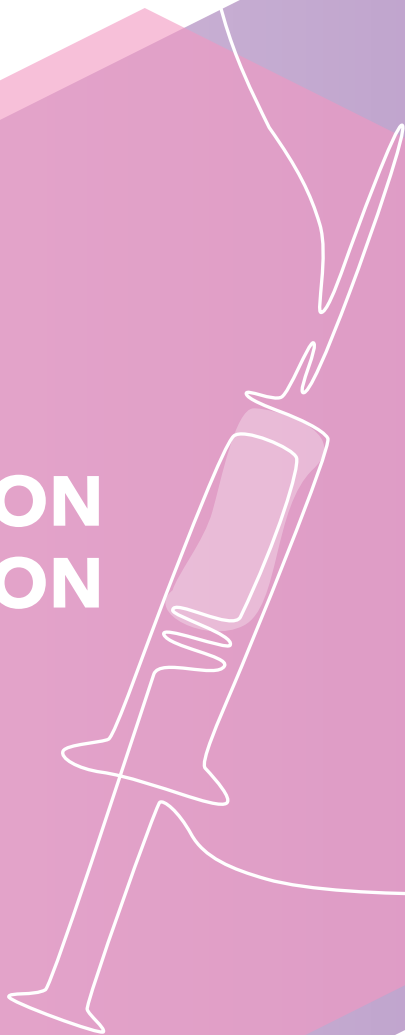


Prolutex®

Solution for injection
in pre-filled syringe

ADMINISTRATION INSTRUCTION



Caring Innovation

Prolutex[®]

ADMINISTRATION INSTRUCTIONS

A. Preparing your injection



The following items are not supplied with your medicine:

- Two alcohol wipes
- A sharps container (for safe disposal of pre-filled syringes)



It is important to keep everything as clean as possible, so start by washing your hands thoroughly...



...and drying on a clean towel.



Choose a clean area to prepare your injection.

B. Checking pack



Do not use the product if the packaging is open, damaged or the product is expired.

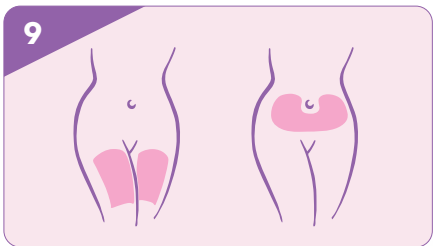


Make sure that the pre-filled syringe of Prolutex® contains the solution.

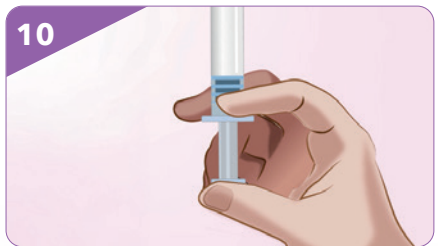


Do not use this medicine if you notice particles in the solution or if the solution is not clear.

C. Injection



Your doctor or healthcare professional will have already shown you where to inject Prolutex® (e.g. tummy or front of thigh).



Hold the syringe with the needle pointing upwards and slowly press the plunger until all the air is out of the syringe and at least one drop of solution comes out of the tip of the needle.



11
Open the alcohol wipe and carefully clean the area of skin to be injected and allow it to dry.



12
Remove the cap. Once the cap is removed, do not allow the needle to touch anything. This is to make sure the needle remains clean (sterile).



13
Hold the syringe in one hand. Use the other hand to gently pinch the skin in the injection site area between your thumb and index finger.



14
Using a dart-like motion, insert the needle into the skin so that the skin and the needle form a right angle.



15
Insert the needle all the way into the skin.
Do not inject directly into a vein.



16
Inject the solution by pushing gently on the plunger in a slow and steady motion until all the solution is injected beneath the skin. Inject all the solution.



17
Release the skin and pull the needle straight out.



18
Wipe the skin at the injection site with an alcohol swab using a circular motion.
Each pre-filled syringe is for single-use only.

D. Disposal of used items



19
Once you have finished your injection, put the pre-filled syringe into a sharps container.



20

PACK

- Prolutex® is a clear colourless solution for injection in pre-filled syringe supplied in a glass syringe.
- Use as directed by physician.
- Each pre-filled syringe is for single-use only.



How to store Prolutex®

- Do not refrigerate or freeze.
- Store in the original package in order to protect from light.
- Keep out of the sight and reach of children.

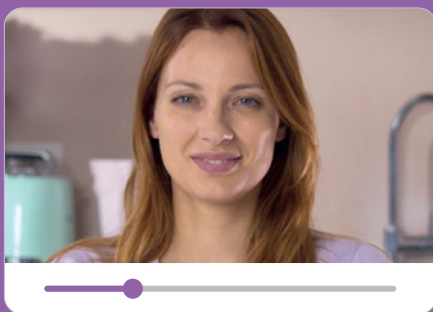
Do not use this medicine if you notice particles in the solution or if the solution is not clear.
Do not use this medicine after the expiry date.

Read the package insert carefully and consult your doctor or pharmacist if you have any questions.

Prolutex[®]

Solution for injection
in pre-filled syringe

ADMINISTRATION INSTRUCTIONS



Watch the
step-by-step video
of this guide.

<https://vimeo.com/videohealth/prolutex-administration-instructions>

52608



Caring Innovation